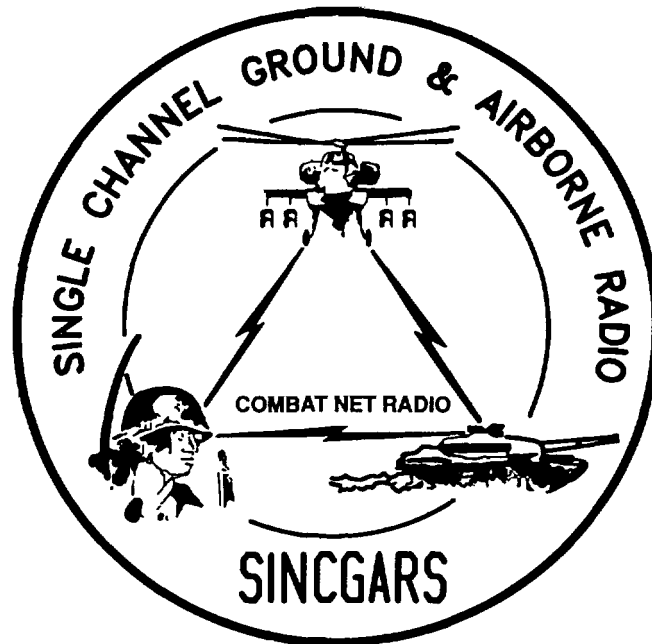


TECHNICAL BULLETIN



INSTALLATION INSTRUCTIONS FOR
INSTALLATION KIT,
ELECTRONIC EQUIPMENT MK-2383/VRC
(NSN 5895-01-217-3823) (EIC: N/A)
TO PERMIT INSTALLATION OF RADIO SET
AN/VRC-90 SERIES
INTO
CARRIER, COMMAND POST: LIGHT TRACKED
M577 AI /A2

Approved for public release; distribution is unlimited.

HEADQUARTERS, DEPARTMENT OF THE ARMY

1 SEPTEMBER 1993

TECHNICAL BULLETIN

NO. 11-5820890-20-62

HEADQUARTERS,
DEPARTMENT OF THE ARMY
WASHINGTON, D.C. 1 September 1993

INSTALLATION INSTRUCTIONS FOR
INSTALLATION KIT,
ELECTRONIC EQUIPMENT MK-2383NRC
(NSN 5895-01-217-3823) (EIC: N/A)
TO PERMIT INSTALLATION OF RADIO SET
ANNRC-90 SERIES
INTO
CARRIER, COMMAND POST: LIGHT TRACKED
M577 A1/A2

REPORTING OF ERRORS AND RECOMMENDING IMPROVEMENTS

You can help improve this manual. If you find any mistakes or if you know of a way to improve the procedures, please let us know. Mail your letter, DA Form 2028 (Recommended Changes to Publications and Blank Forms), or DA Form 2028-2 located in the back of this manual direct to: Commander, US Army Communications-Electronics Command and Fort Monmouth, ATTN: AMSEL-LC-LM-LT, Fort Monmouth, New Jersey 07703-5007. In either case, a reply will be furnished direct to you.

TABLE OF CONTENTS

| Subject | Section | Page |
|--|---------|------|
| Scope | 0.1 | 1 |
| General Information..... | 0.2 | 1 |
| Maintenance Forms, Records, and Reports | 0.3 | 1 |
| Reports of Maintenance and Unsatisfactory Equipment | 0.3.1 | 1 |
| Report of Packing and Handling Deficiencies | 0.3.2 | 1 |
| Discrepancy in Transportation Deficiency Report (TDR) (SF 361) | 0.3.3 | 1 |
| Consolidated Index of Army Publications..... | 0.4 | 1 |
| Purpose of Installation..... | 1. | 2 |
| End Item or System to be Modified | 2. | 2 |
| Application Times | 3. | 2 |
| Time for Completion of Installation..... | 3.1 | 2 |
| Time for Installation of One Assembly or Component..... | 3.2 | 2 |
| Preparation for Installation..... | 4. | 2 |
| Preparation of Vehicle | 4.1 | 2 |
| Preparation of MK..... | 4.2 | 2 |
| MK, Distribution, and Consumables | 4.3 | 3 |
| Required..... | 4.4 | 7 |
| Tools and Test, Measurement, and Diagnostic Equipment (TMDE) | | |
| Installation Procedures..... | 5. | 8 |
| Installation of Antenna AS-3900NRC (antenna)..... | 5.1 | 10 |
| Installation of Antenna Base..... | 5.1.1 | 10 |
| Installation of Top Antenna Assembly | 5.1.2 | 11 |
| (mounting base) | 5.2 | 12 |
| Installation of Mounting Base, Electrical Equipment MT-6352NRC | | |
| Installation of Cables | 5.3 | 14 |
| Installation of Loudspeaker, Permanent Magnet LS-454/U (speaker) | 5.4 | 16 |
| Installation of MK-2499NRC..... | 5.5 | 17 |
| Post-Installation and Checkout..... | 5.6 | 17 |
| Appendix A. References..... | | A-1 |

LIST OF ILLUSTRATIONS

| Figure | Title | Page |
|--------|---|------|
| 4-1 | MK Illustrated Parts List | 5 |
| 4-2 | TSEC/KY-57 Illustrated Parts List | 6 |
| 5-1 | MK and Radio Installation..... | 8 |
| 5-2 | Antenna Base Installation..... | 10 |
| 5-3 | Top Antenna Assembly Installation..... | 11 |
| 5-4 | Mounting Base Installation | 12 |
| 5-5 | Cable Installation..... | 14 |
| 5-6 | Speaker Installation..... | 16 |
| 5-7 | MK-2499NRC Installation..... | 17 |
| 5-8 | Cable Diagram | 18 |

LIST OF TABLES

| Number | Title | Page |
|--------|--|------|
| 4-1 | MK Parts List for Installation of Radio Set ANNRC-90 Series..... | 4 |
| 4-2 | Additional Items Required for Installation When Using RT-1439NRC | 6 |

0.1 SCOPE

This technical bulletin provides Installation Instructions for Installation kit, Electronic Equipment MK-2383NRC, commonly referred to as the Mounting Kit (MK). The MK shall be installed into the following type of vehicle(s):

- Carrier, Command Post: Light Tracked M577 A1/A2

The MK is used for installation of radio set components at field locations. The information contained in this technical bulletin is the official authorization to perform the installation at the unit maintenance level.

NOTES

- This technical bulletin is not an authorization for requisition or turn-in of vehicles.
- This technical bulletin does not establish quantity or types of vehicles assigned to using units.

This technical bulletin does not contain information on the maintenance or replacement of the MKs. This information is contained in the MAC of TM 11-5820-890-20-2, TM 11-5820-890-20-4 and RPSTL of TM 11-5820-890-20P.

0.2 GENERAL INFORMATION.

The MK becomes operable when all the radio set components are installed in the vehicle and correct power is supplied. Refer to TM 11-5820-890-20-1 or TM 11-5820-890-20-4 for installation, Operational (OP) Check instructions, and required maintenance procedures. Refer to TM 11-5820-890-20P for repair parts.

Included in the Radio Set ANNRC-90 Series are:

- Radio Set ANNRC-90 (for RT-1 439NRC)
- Radio Set ANNRC-90A (for RT-1 523(C)/U)

0.3 MAINTENANCE FORMS, RECORDS, AND REPORTS.

0.3.1 Reports of Maintenance and Unsatisfactory Equipment. See section 4.2.2.3 for information.

0.3.2 Report of Packaging and Handling Deficiencies. See section 4.2.2.1 for information.

0.3.3 Discrepancy in Transportation Deficiency Report (TDR) (SF361). See section 4.2.2.2 for information.

0.4 CONSOLIDATED INDEX OF ARMY PUBLICATIONS.

Refer to the latest issue of DA Pam 25-30 to determine whether there are new changes, or additional publications pertaining to the equipment.

1. PURPOSE OF INSTALLATION.

The Installation Kit, Electronic Equipment MK-2383NRC (MK) contains the items needed to mount Radio Set ANNRC- 90A in a Carrier, Command Post: Light Tracked M577 A1/A2. If Radio Set ANNRC-90 is to be installed, communications security equipment (TSEC/KY-57) will need to be installed also. See section 5.5 for information.

2. END ITEM OR SYSTEM TO BE MODIFIED.

Not applicable

3. APPLICATION TIMES.

3.1 Time for Completion of Installation. Using two people, a total of 3.5 work hours is required. Typical vehicle downtime is 3.5 hours.

3.2 Time for Installation of One Assembly or Component. The following table lists the time required to install one component. All times have been rounded off to the nearest half hour. The sum of these times will not reflect the typical vehicle downtime.

| ITEM | SECTION | TIME |
|--|---------|------|
| Antenna AS-3900NRC | 5.1 | 1.0 |
| Mounting Base, Electrical Equipment MT-6352NRC | 5.2 | 0.5 |
| Cables | 5.3 | 1.0 |

4. PREPARATION FOR INSTALLATION.

This section explains how to prepare the vehicle and MK for installation.

4.1 Preparation of Vehicle. To prepare the vehicle for installation, insure that the site includes adequate lighting and a power source when drilling is required. Inspect the vehicle for damage that could affect installation. Have any such damage repaired before installing MK.

4.1.1 Items to be Removed. Remove existing ANNRC-12 radio family installation kit/harness. See TM 11-5820-401-20-2 for removing items used with intercom systems, or TM 11-5820-401-20-1 (used without intercom systems), and TM 9-2350-261-20.

4.1.2 List of Items to be Retained. Not applicable.

4.2 Preparation of MK. To prepare MK, unpack, inspect and check inventory.

4.2.1 Precautions During Handling. Observe these steps to prevent equipment damage.

- a. Keep dust covers in place on connectors.
- b. Do not disassemble or modify parts in MK unless authorized to do so.
- c. Keep mounting hardware covered and protected until needed.
- d. When exposed to moisture, rain or salt water, keep all parts dry to prevent corrosion.

4.2.2 Unpack and Inspect Equipment.

4.2.2.1 Inspect Packaging for Evidence of Damage. Any shipping damage should be reported on SF364 Report of Discrepancy (ROD) as prescribed in AR 735-11-2/DLAR 4140.55/NAVMATINST 4355.73A/AFR 400-64/MCO 4430.3F.

4.2.2.2 Unpack and Inventory MK. If any item is missing, fill out and forward Transportation Deficiency Report (TDR) (SF361) as described in AR 55-38/NAVSUPINST 4610.33C/AFR 75-18/MCO P4610.19D/DLAR 4500.15.

4.2.2.3 Examine Each Item for Damage. If any item is damaged, fill out and forward SF364 Report of Discrepancy (ROD) as prescribed in AR 735-11-2/DLAR 4140.55/NAVMATINST 4355.73A/AFR 400-64/MCO 4430.3F. All damages should be reported as prescribed by DA Pam 738-750, as contained in Maintenance Management Update.

4.3 MK, Distribution, and Consumables.

4.3.1 Items Supplied in MK and/or Required for Installation. Use Table 4-1 and figure 4-1 to identify and inventory MK parts supplied to install Radio Set AN/VRC-90 Series. Refer to Table 4-2 and figure 4-2 to identify additional items required to install when using RT-1439/VRC.

4.3.2 Distribution and Issue Instructions.

- a. US Forces: Do not requisition MK. They will be shipped automatically.
- b. US Army Depots: Requisition MK through supply channels.
- c. Multiservice: Instructions shall be included for multiservice modifications.
- d. MAP/MAS Countries: Instructions shall be provided for MAP/MAS countries.

Table 4-1. MK Parts List for Installation of Radio Set AN/VRC-90 Series

| NSN | ITEM DESCRIPTION AND PART NUMBER | QUANTITY IN MK | SMR CODE | FIGURE ITEM NO. |
|------------------|---|-------------------|-------------|--------------------|
| 5985-01-297-2971 | Antenna AS-3900/VRC (A3017899-1) | 1 | PAOOF A | 4-1, 2 |
| 5305-00-847-1159 | Screw, Cap, Hexagon (3/8-16 x 1 3/4 in) MS35307-365 | 4 | PAOZZA | |
| 5310-00-913-8881 | Nut, Hexagon (3/8-16 in) MS51971-3 (Not Used) | 4 | PAOZZA | |
| 5310-00-061-1258 | Washer, Lock, Internal/External-Toothed (Not Used) (3/8 in) MS45904-76 (4 Not used) | 8 | PAOZZA | |
| 5310-00-889-2527 | Washer, Lock, Internal/External-Toothed (5/16 in) MS45904-72 | 2 | PAOZZA | |
| 5306-00-225-9086 | Bolt, Machine (5/16-24 x 5/8 in) MS90726-31 (Not Used) | 1 | PAOZZA | |
| 5330-01-205-2864 | Gasket (A3013655-1) | 1 | PAOZZA | |
| 5965-00-876-2375 | Loudspeaker, Permanent Magnet LS-454/U | 1 | PAOZZA | 4-1, 4 |
| 5975-01-188-8873 | Mounting Base, Electrical Equipment MT-6352/VRC (A3013367-1) | 1 | PAOOF A | 4-1, 1 |
| 5306-00-225-9089 | Bolt, Machine (5/16-24 x 1 in) MS90726-34 | 5 | PAOZZA | |
| 5310-00-889-2527 | Washer, Lock, Internal/External-Toothed (5/16 in) MS45904-72 | 10 | PAOZZA | |
| 5310-00-880-7746 | Nut, Hexagon (5/16 - 24 in) MS51968-5 | 5 | PAOZZA | |
| 5995-01-219-1845 | Cable Assembly, Power, Electrical CX-13306/VRC (8 FT, 0 IN) (A3014043-4) | 1 | PAOZZA | 4-1, 7 |
| 5995-01-219-7024 | Cable Assembly, Radio Frequency CG-3856/VRC (4 FT, 0 IN) (A3014032-2) | 1 | PAOZZA | 4-1, 6 |
| 5306-00-225-8496 | Bolt, Machine (5/16-18 x 5/8 in) MS90725-31 | 1 | PAOZZA | |
| 4020-01-341-8795 | Fiber Rope Assembly, Single Leg (A3167672-1) | 1 | PAOZZA | 4-1, 5 |
| 5965-00-043-3463 | Handset H-250/U | 1 | PAOZZA | 4-1, 3 |
| 5340-00-067-3868 | Clamp, Loop (1/4-5/16 in) MS21333-109 | 1 | PAOZZA | |
| 5340-00-809-1494 | Clamp, Loop (3/4-1/4 in) MS21333-105 | 1 | PAOZZA | |
| 5340-00-400-0002 | Clamp, Loop (1 1/4-1/4 in) MS9350-19 | 4 | PAOZZA | |
| 5305-00-068-0501 | Screw, Cap, Hexagon (1/4 - 20 x 5/8 in) MS90725-5 | 5 | PAOZZA | |
| 5975-00-111-3208 | Strap, Tiedown, Electrical Components MS90725-5 | 5 | PAOZZA | |
| 5310-00-582-5965 | Washer, Lock (1/4 in) MS35338-44 | 5 | PAOZZA | |

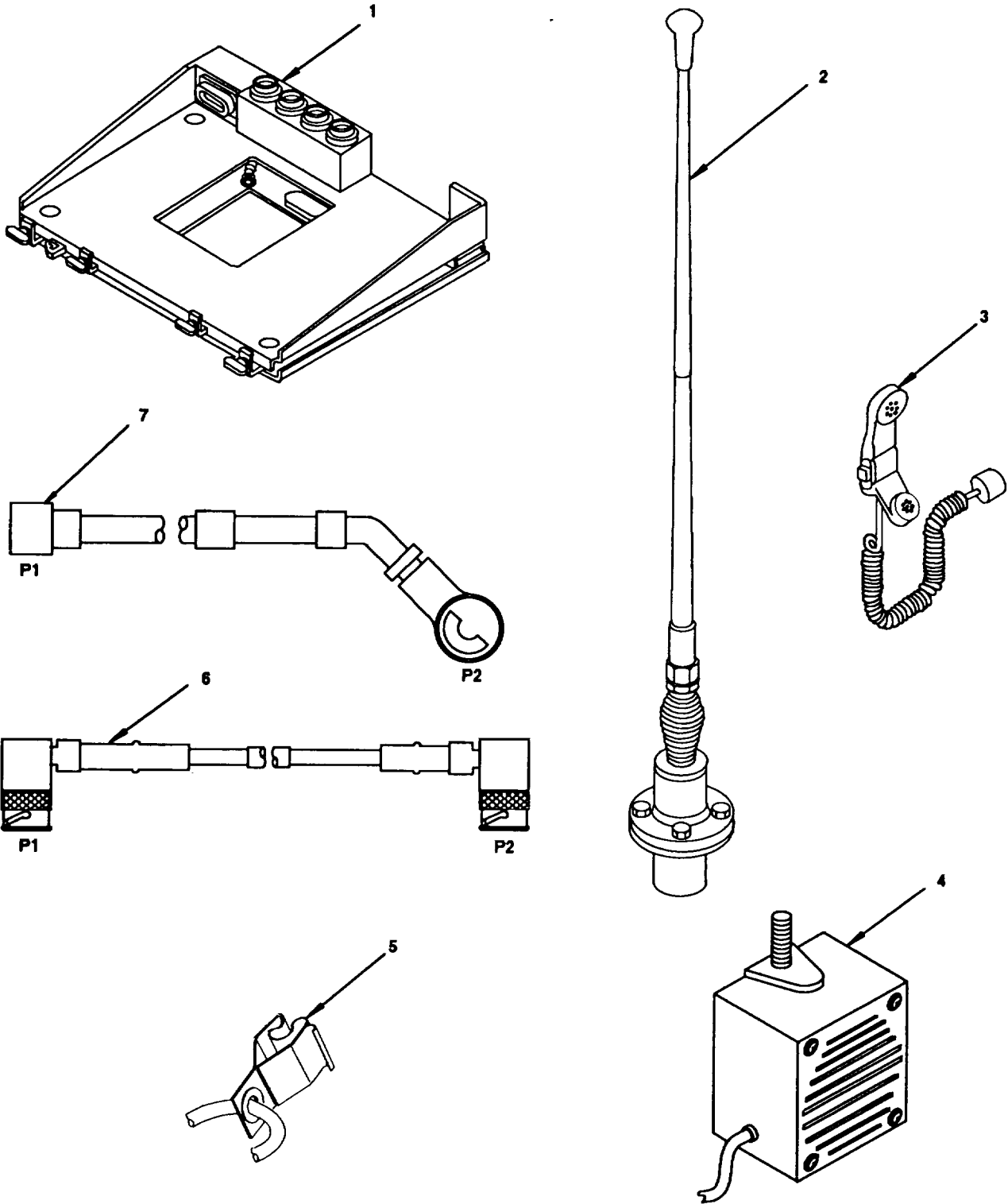


Figure 4-1. MK Illustrated Parts List

Table 4-2. Additional Items Required for Installation When Using RT-14391VRC

| NSN | ITEM DESCRIPTION AND PART NUMBER | QUANTITY IN MK | SMR CODE | FIGURE ITEM NO. |
|------------------|--|----------------|----------|----------------------------|
| 5995-01-222-4210 | Cable Assembly, Special Purpose, Electrical CX-13293/VRC (4 FT, 0 IN) (A3014034-1) | 1 | PAOZZA | 4-3, 5 |
| 5995-01-226-5482 | Cable Assembly, Power, Electrical CX-13303/VRC (2 FT, 6 IN) (A3014040-5) | 1 | PAOZZA | 4-3, 4 |
| 5306-00-225-9088 | Bolt, Machine (5/16-24 x 7/8 in) MS90726-33 | 10 | PAOZZA | 4-3, 1 4-3, 2 4-3, 3 |
| | Bracket, Mounting (A3050660-1) | 1 | XBOZZA | |
| | Bracket, Multiple Angle (A3050659-1) | 1 | XBOZZA | |
| | Bracket, Multiple Angle (A3050658-1) | 1 | XBOZZA | |
| 5310-00-880-7746 | Nut, Hexagon (5/16-24 in) MS51968-5 | 10 | PAOZZA | |
| 5310-00-081-4219 | Washer, Flat (5/16 in) MS27183-12 | 10 | PAOZZA | |
| 5310-00-889-2527 | Washer, Lock, Internal/External-Toothed (5/16 in) MS45904-72 | 10 | PAOZZA | |

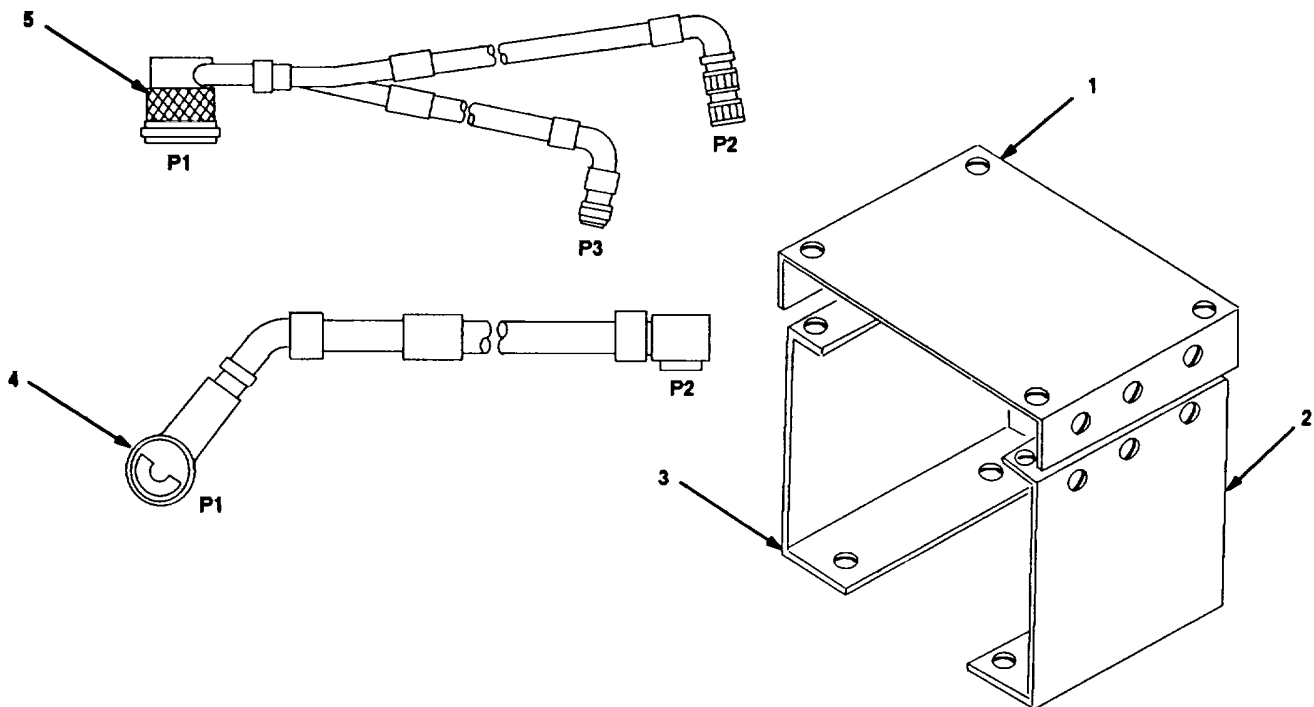


Figure 4-2. TSEC/KY-57 Illustrated Parts List

4.3.3 Consumable Materials. The table below lists materials required for installation but not supplied with MK.

| NSN | NOMENCLATURE |
|------------------|-------------------------------|
| 8040-00-117-8510 | Adhesive-Sealant, Clear, RTV |
| 6850-00-880-7616 | Silicone Compound, MIL-S-8660 |

4.4 Tools and Test, Measurement, and Diagnostic Equipment (TMDE) Required. The following tools and TMDE are needed for installation.

| NOMENCLATURE | NSN | QUANTITY |
|--|------------------|----------|
| Radio Set | | 1 |
| Pocket Knife, Electrician's | 5110-00-240-5943 | 1 |
| Screwdriver, No. 2 Point Philips, 4 in | 5120-00-234-8913 | 1 |
| Screwdriver, ¼ in Flatblade, 4 in | 5120-00-222-8852 | 1 |
| Pliers, Round Nose | 5120-00-240-6172 | 1 |
| Pliers, Diagonal Cutting | 5110-00-965-0974 | 1 |
| Wrench, Open/Box: 7/16 in | 5120-00-228-9505 | 1 |
| 1/2 in | 5120-00-228-9506 | 1 |
| 9/16 in | 5120-00-228-9507 | 1 |
| Handle, Socket Wrench | 5120-00-240-5364 | 1 |
| Socket: 7/16 in | 5120-00-227-6703 | 1 |
| 1/2 in | 5120-00-237-0977 | 1 |
| 9/16 in | 5120-00-227-6704 | 1 |
| Electric Drill | 5130-00-889-8994 | 1 |
| Drill Bits: 13/32 in | 5133-00-227-9668 | 1 |
| 5/16 in | 5133-00-227-9662 | 1 |

*Use radio issued with your vehicle if available.

5. INSTALLATION PROCEDURES.

This section describes where and how to install MK items in the vehicle. See figure 5-1 for an overall view of where vehicular MK equipment, as well as radio components, typically will be installed. When installing MK equipment, be sure to read and follow instructions and illustrations carefully. If Radio Set AN/VRC-90 is to be installed, communications security equipment (TSEC/KY-57) will need to be installed also. See section 5.5 for information.

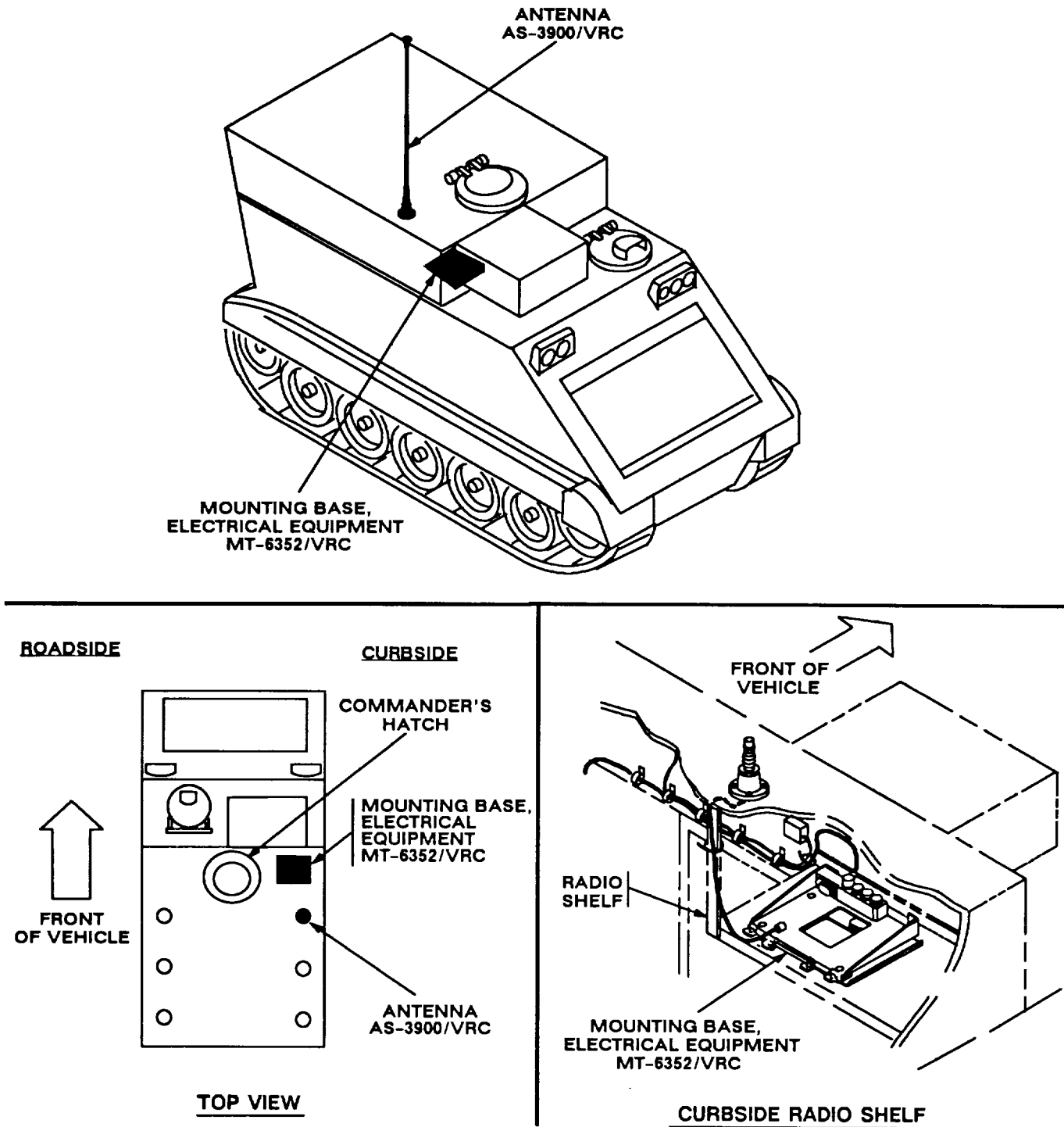
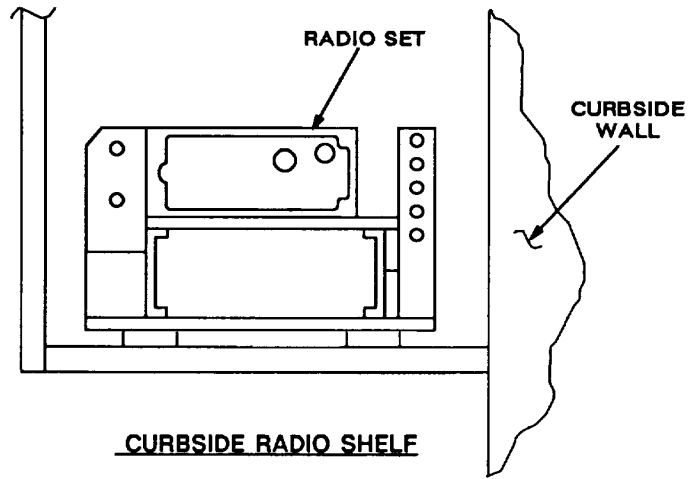


Figure 5-1. (1). MK and Radio Installation: MK Equipment Locations

INSTALLATION
FOR
AN/VRC-90A



INSTALLATION
FOR
AN/VRC-90

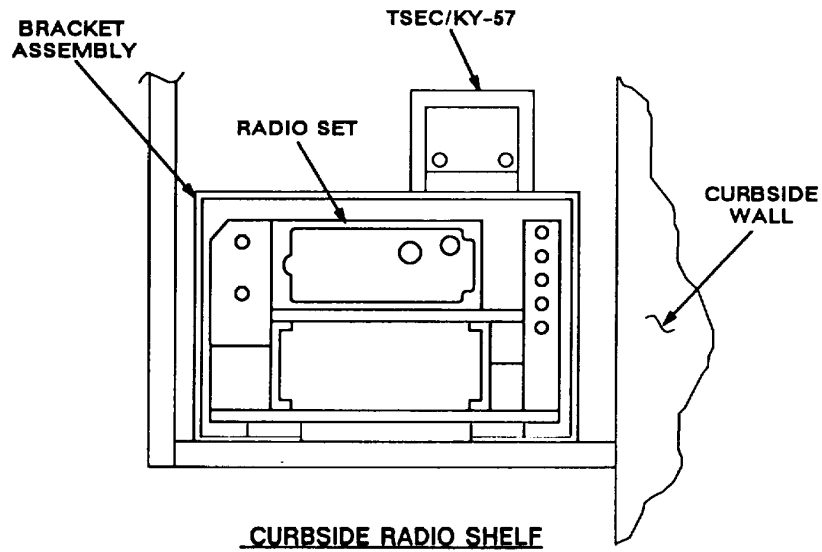


Figure 5-1 (2). MK and Radio Installation: Radio Equipment Locations

5.1 Installation of Antenna AS-3900/VRC (antenna). See figure 5-1 (1) for location.

5.1.1 Installation of Antenna Base.

| ITEM | ACTION | REMARKS |
|--|--|---------------------------------|
| NOTE | | |
| Apply a thin coat of adhesive-sealant to both sides of each internal/external-toothed (IET) washer during installation, and to the area of contact where IET washer is to be placed. | | |
| a. Gasket (2). | Apply a thin coat of silicone compound to both sides; then place on port and align mounting holes. See figure 5-2. | |
| b. Antenna base (1). | Place on top of gasket (2) and port; then align mounting holes. | |
| c. Four cap screws (8) and four internal/external-toothed (IET) washers (7). | Install and secure to antenna base (1) | Tools: 9/16 in socket and port. |
| d. Ground strap (3), loop clamp (6), machine bolt (5) and two IET washers (4). | Install (without securing) to existing boss on curbside ceiling. | Tools: 1/2 in socket. |

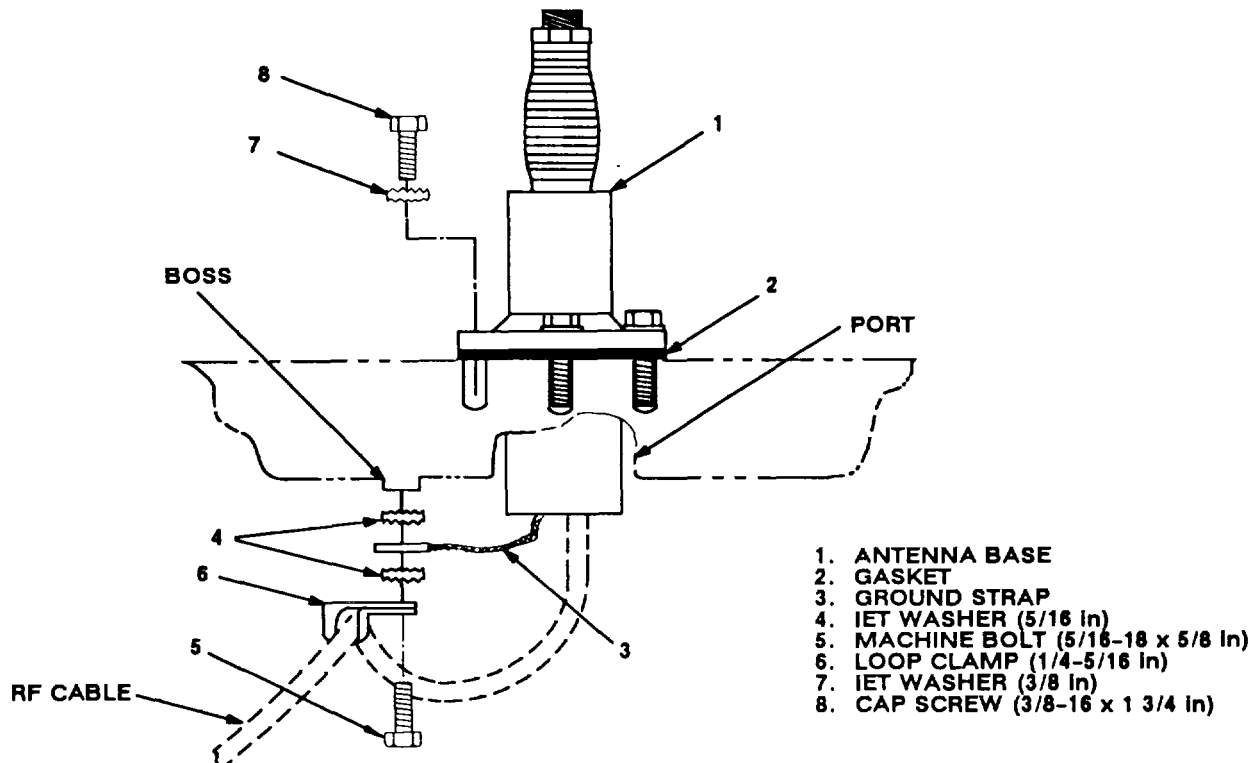
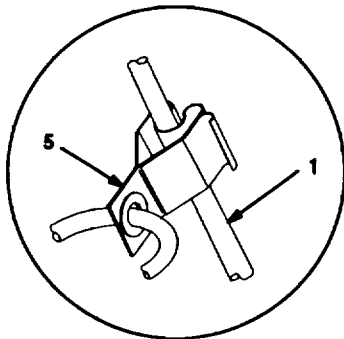
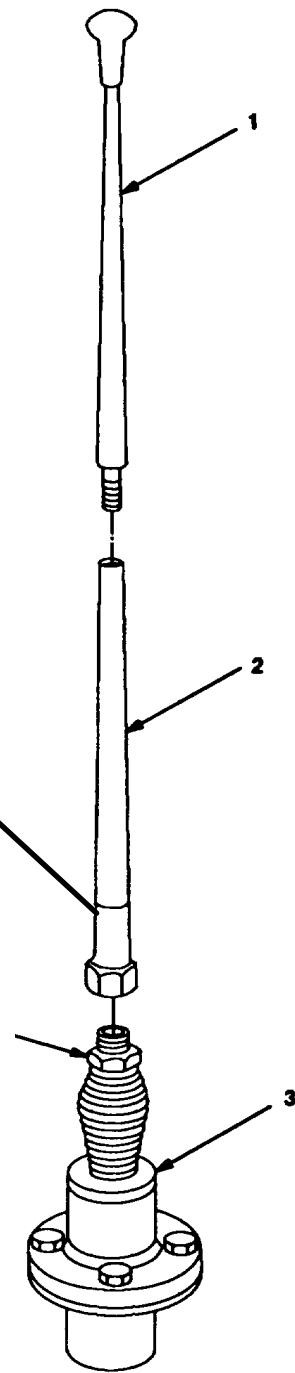


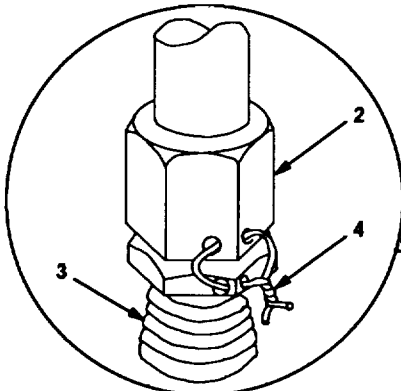
Figure 5-2. Antenna Base Installation: Forward Curbside Antenna Port

5.1.2 Installation of Top Antenna Assembly. The top portion of the antenna includes a lower element and an upper element (with installed cap). Use the following procedure to assemble, install and tie down all antennas.

| ITEM | ACTION | REMARKS |
|-----------------------------|--|---------|
| a. Antenna elements (1, 2). | Apply silicone compound to element threads and assemble. See figure 5-3. | |
| b. Antenna element (2). | Install and hand-tighten to antenna base (3). | |
| c. Lock wire (4). | Install to antenna element (2) and antenna base (3). See figure 5-3, detail A. Cut and remove excess wire with diagonal cutting pliers. | |
| d. Fiber rope assembly (5). | Attach clip to antenna element (1). Tie rope to vehicle to position antenna in desired location. See figure 5-3, detail B. | |



DETAIL B

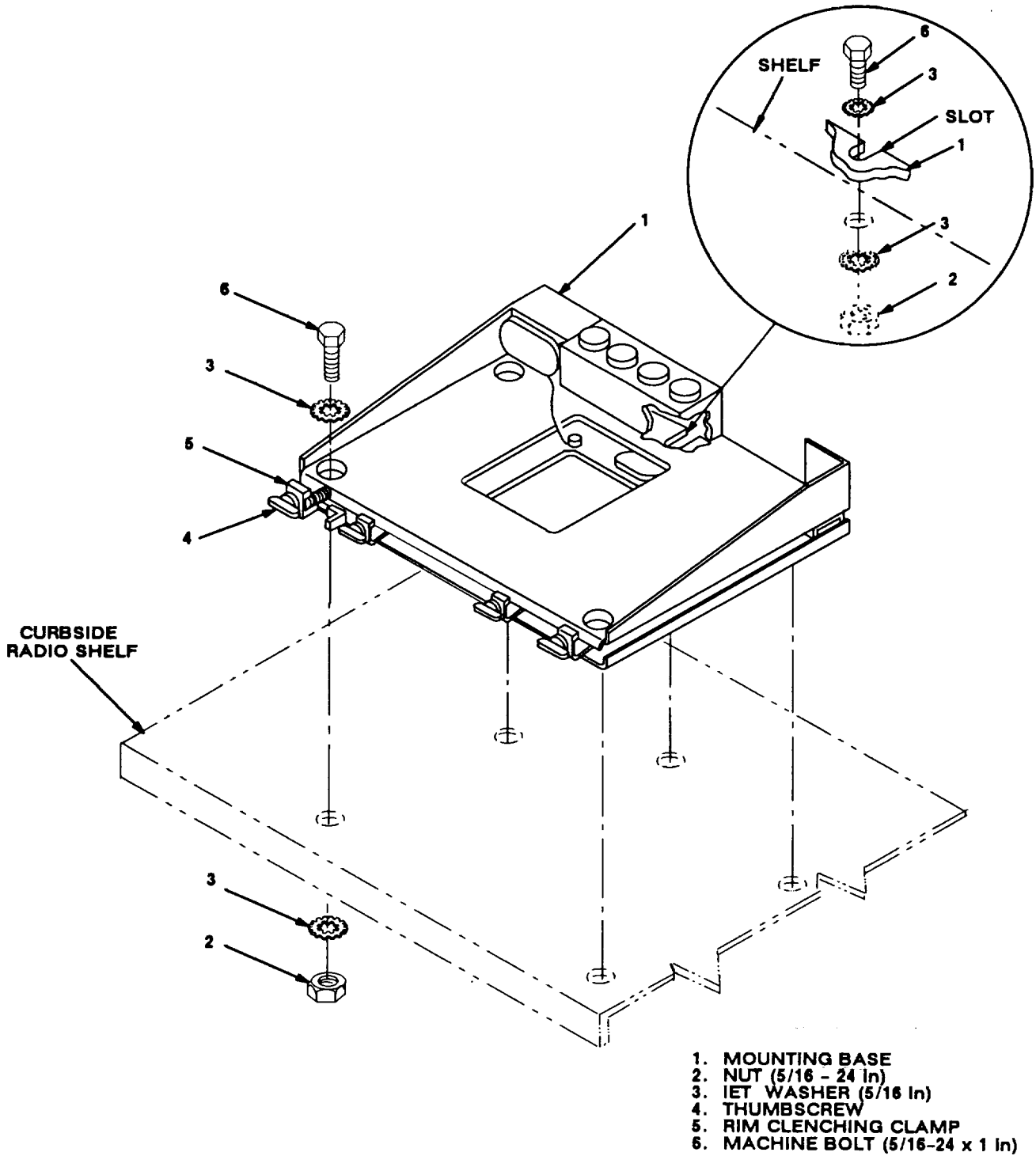


DETAIL A

- 1. ANTENNA ELEMENT (UPPER)
- 2. ANTENNA ELEMENT (LOWER)
- 3. ANTENNA BASE
- 4. LOCK WIRE
- 5. FIBER ROPE ASSEMBLY

Figure 5-3. Top Antenna Assembly Installation

5.2 Installation of Mounting Base, Electrical Equipment MT-63521VRC (mounting base). Remove and retain attaching bag of 5/16 in mounting hardware for installation. To insure good electrical grounding, any rust, corrosion or paint around mounting holes in radio shelf should be removed before installing the mounting base.



- 1. MOUNTING BASE
- 2. NUT (5/16 - 24 in)
- 3. IET WASHER (5/16 in)
- 4. THUMBSCREW
- 5. RIM CLENCHING CLAMP (5/16-24 x 1 in)
- 6. MACHINE BOLT (5/16-24 x 1 in)

Figure 5-4. Mounting Base Installation

5.2 Installation of Mounting Base, Electrical Equipment MT-63521VRC (mounting base). Continued

| ITEM | ACTION | REMARKS |
|--|---|---|
| NOTE | | |
| Apply a thin coat of adhesive-sealant to both sides of each internal/external-toothed (IET) washer during installation, and to the area of contact where IET washer is to be placed. | | |
| a. Mounting base (1). | Place on curbside radio shelf. See figure 5-4. | |
| b. Two outer thumbscrews (4). | Turn ccw until both sets of threads have cleared center of holes. | |
| c. Mounting base (1). matching hole pattern in shelf. | Aline four holes and rear slot with | |
| d. Five machine bolts (6), ten IET washers (3) and five nuts (2). | Install and secure to mounting base (1) and shelf. | Tools: 1/2 in socket and 1/2 in open/box wrench. |
| e. Two outer thumbscrews (4). | Tighten and secure to rim clenching clamps (5) and mounting base (1). | |

5.3 Installation of Cables. To accomplish the installation, leave loop clamps and tiedown straps loose enough to adjust cable slack and allow easy adjustment of equipment. When installation is complete, tighten and secure clamps and tiedown straps.

WARNING

Make sure vehicle power source is positioned OFF or disconnected before installing cables.

| ITEM | ACTION | REMARKS |
|----------------------------------|---|---------|
| a. Power cable (1) connector P1. | Connect and secure to power Bendix connector. See figure 5-5. | |
| b. Power cable (1). | Route along existing cable harness (on forward wall) to curbside radio shelf. | |

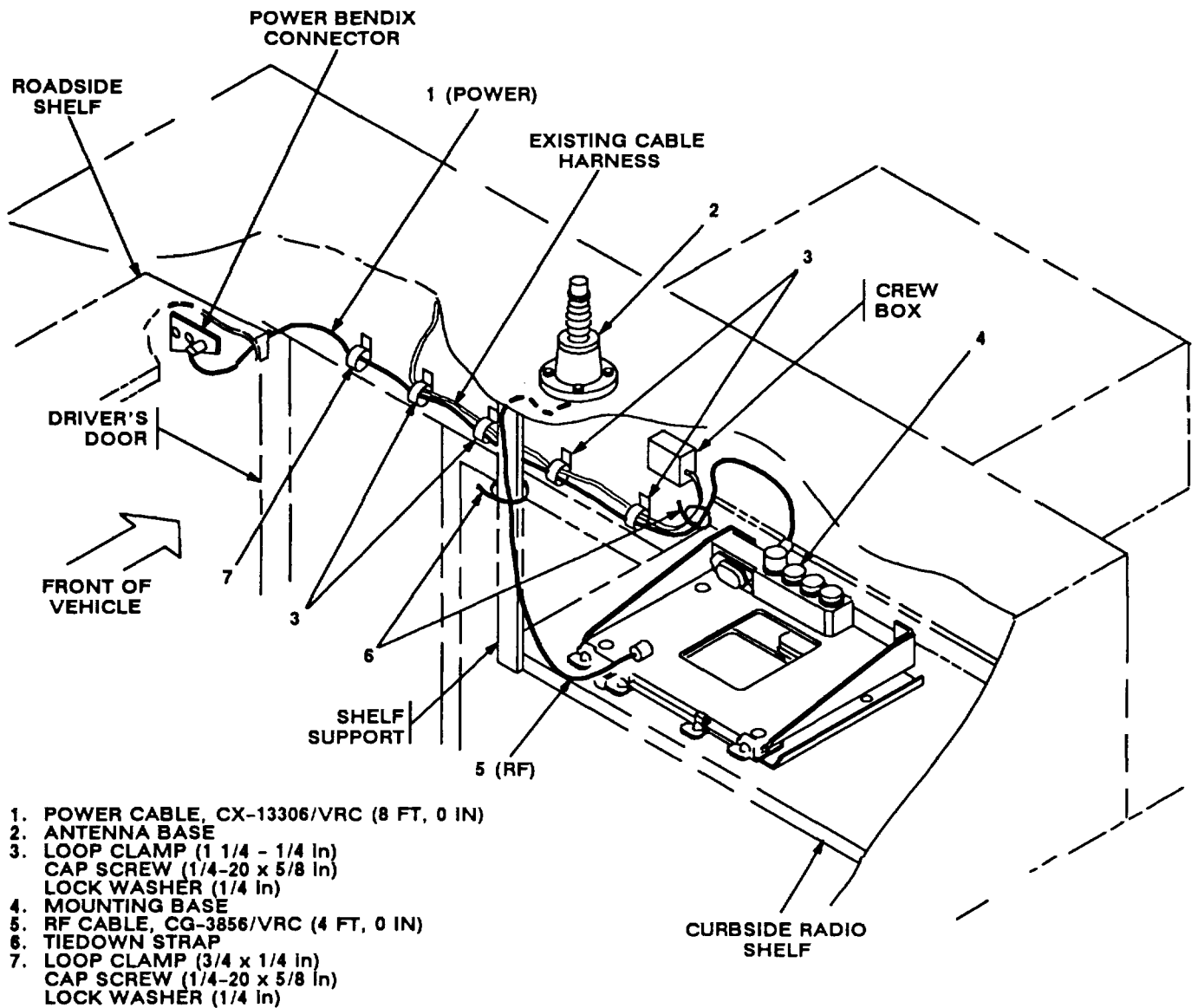


Figure 5-5. Cable Installation: Forward Wall

5.3 Installation of Cables. Continued

| ITEM | ACTION | REMARKS |
|--|---|------------------------|
| c. Power cable (1) connector P2. | Position on top of mounting base (4). See figure 5-5. | |
| d. Four loop clamps (3), four cap screws (1/4-20 5/8 in) and four lock washers (1/4 in). | Wrap clamps around power cable (1); then install to existing cable harness. See figure 5-5 for location(s). | Tools: 7/16 in socket. |
| e. Loop clamp (7), cap screw (1/4-20 x 5/8 in) and lock washer (1/4 in). | Wrap clamp around power cable (1); then install to existing boss above driver's door. | Tools: 7/16 in socket. |
| f. RF cable (5) connector P1. | Connect and secure to antenna base (1) connector J1. See figure 5-5. | |
| g. Loop clamp, ground strap and mounting hardware (installed in section 5.1.1, step d). | Remove; then wrap clamp around RF cable (5) and reinstall to existing boss. | Tools: 1/2 in socket. |
| h. RF cable (5) connector P2. | Position on top of mounting base (4). | |
| i. Tiedown strap (6). shelf support. See figure 5-5 for location (s). | Install loosely around RF cable (5) and | |
| j. Tiedown strap (6). and existing cable harness. | Install loosely around power cable (1) | |
| k. Power cable (1) connector P2. | Connect and secure to mounting base (4) connector J1. See figure 5-5. | |

5.4 Installation of Loudspeaker, Permanent Magnet LS-454/U (speaker). Mounting location for speaker may be determined by the vehicle commander. Typical methods used for mounting the speaker are as follows:

Method A. See figure 5-6 (1).

- a. Determine speaker (3) location.
- b. Drill $13/32$ in diameter hole through mounting surface.
- c. Insert speaker (3) stud through drilled hole; then secure with lock washer (2) and wing nut (1).

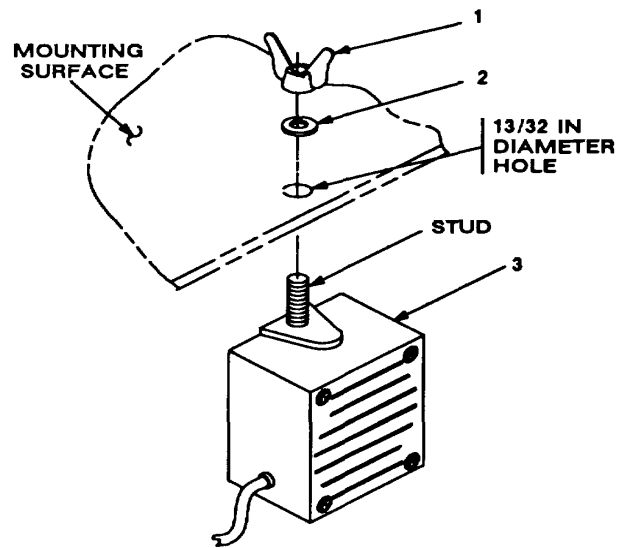


Figure 5-6 (1). Speaker Installation - A

1. WING NUT (3/8-24 In)
2. LOCK WASHER (3/8 in)
3. SPEAKER
4. CAP SCREW (1/4-20 x 1 In)
5. SPEAKER BRACKET
6. LOCK WASHER (1/4 In)
7. NUT (1/4-20 In)

Method B. See figure 5-6 (2).

NOTE

Items (4), (6) and (7) are not supplied in kit.

- a. Determine speaker (3) location.
- b. Drill two $5/16$ in diameter holes through mounting surface.
- c. Install and secure two cap screws (4), two lock washers (6) and two nuts (7) to speaker bracket (5) and mounting surface.
- d. Insert speaker (3) stud through speaker bracket (5) hole; then secure with lock washer (2) and wing nut (1).

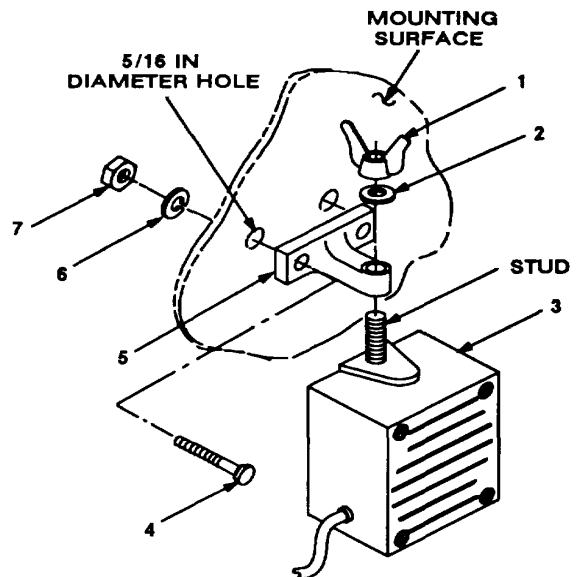


Figure 5-6. (2). Speaker installation - B

5.5 Installation of MK-2499NRC. For Radio Set ANNRC-90, install MK-2499NRC (TSEC/KY-57 security equipment) with mounting bracket, two multiple angle brackets and mounting hardware as shown in figure 5-7. Refer to section 5.6 for connection of cables.

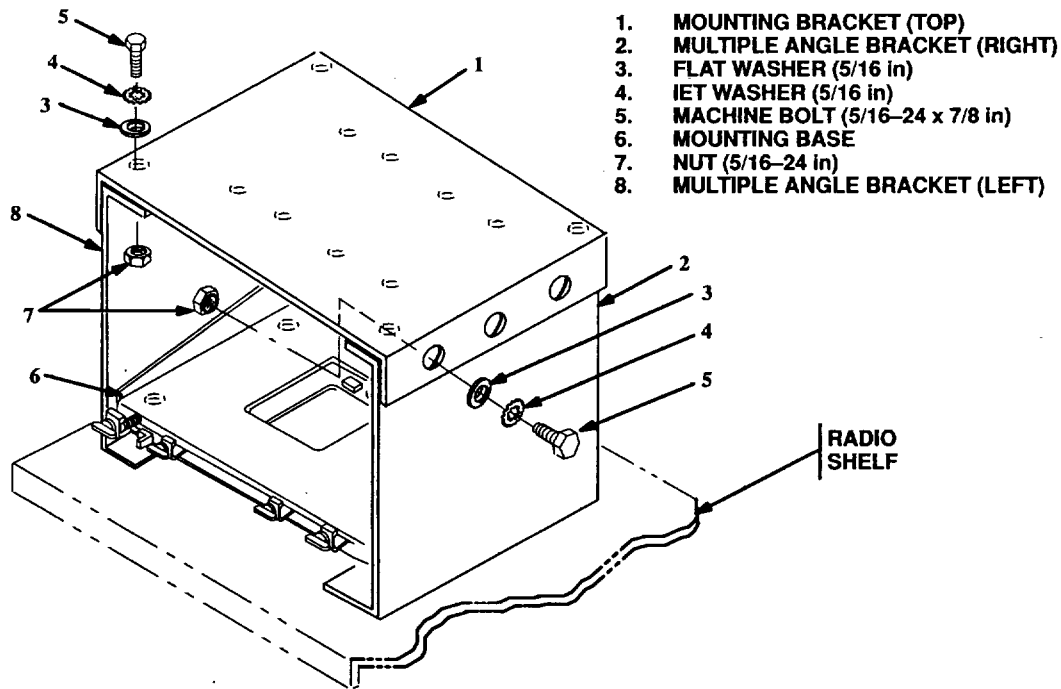
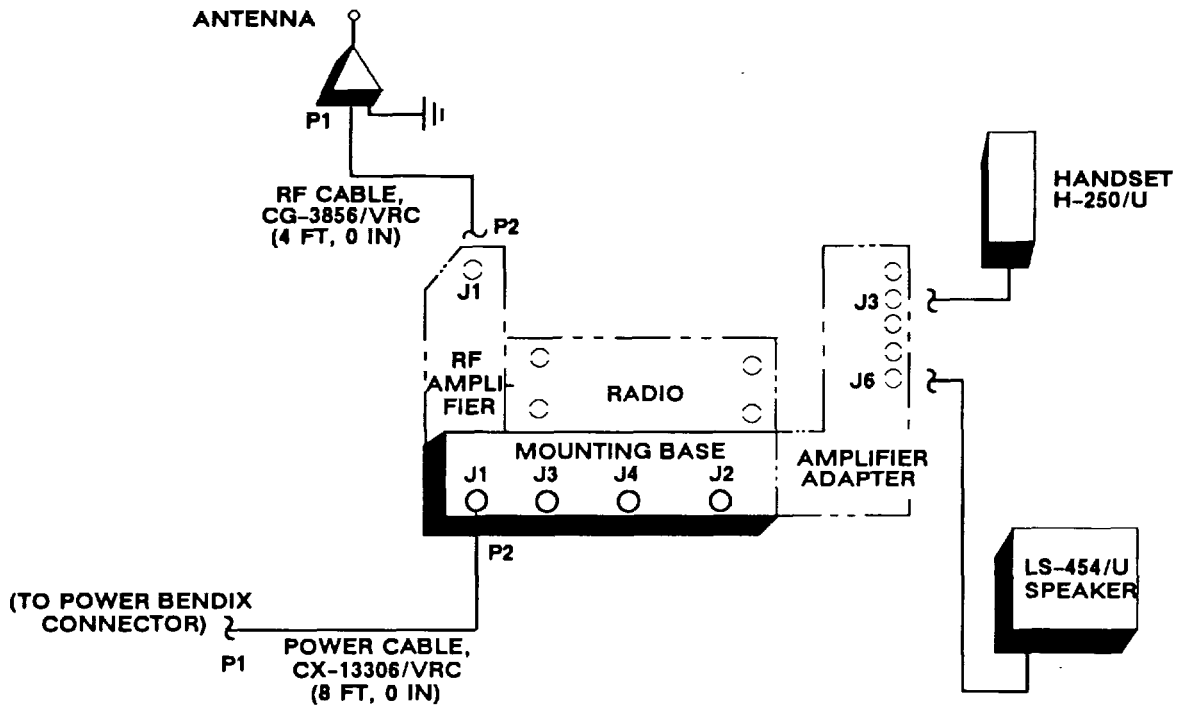


Figure 5-7. MK-2499NRC Installation

5.6 Post-Installation and Checkout. After equipment is installed and cables are connected, perform the following steps.

| ITEM | ACTION | REMARKS |
|-------------------------------|---|---------|
| a. Equipment. | Check for secure mounting. Check for loose parts, connectors and mounting hardware. | |
| b. Cables. | Check for proper installation and connection of cables. See figure 5-8 for cable connections. Unused cables should be stowed in appropriate place inside the vehicle. | |
| c. Loop clamps. | Check that all have been properly installed and tightened. | |
| d. Protective covers. | Insure that all installed cables are covered when not in use or connected. | |
| e. Radio issued with vehicle. | Install and connect cables. See TM 11-5820-890-20-1 or TM 11-5820-890-20-4 for installation and Operational (OP) | |

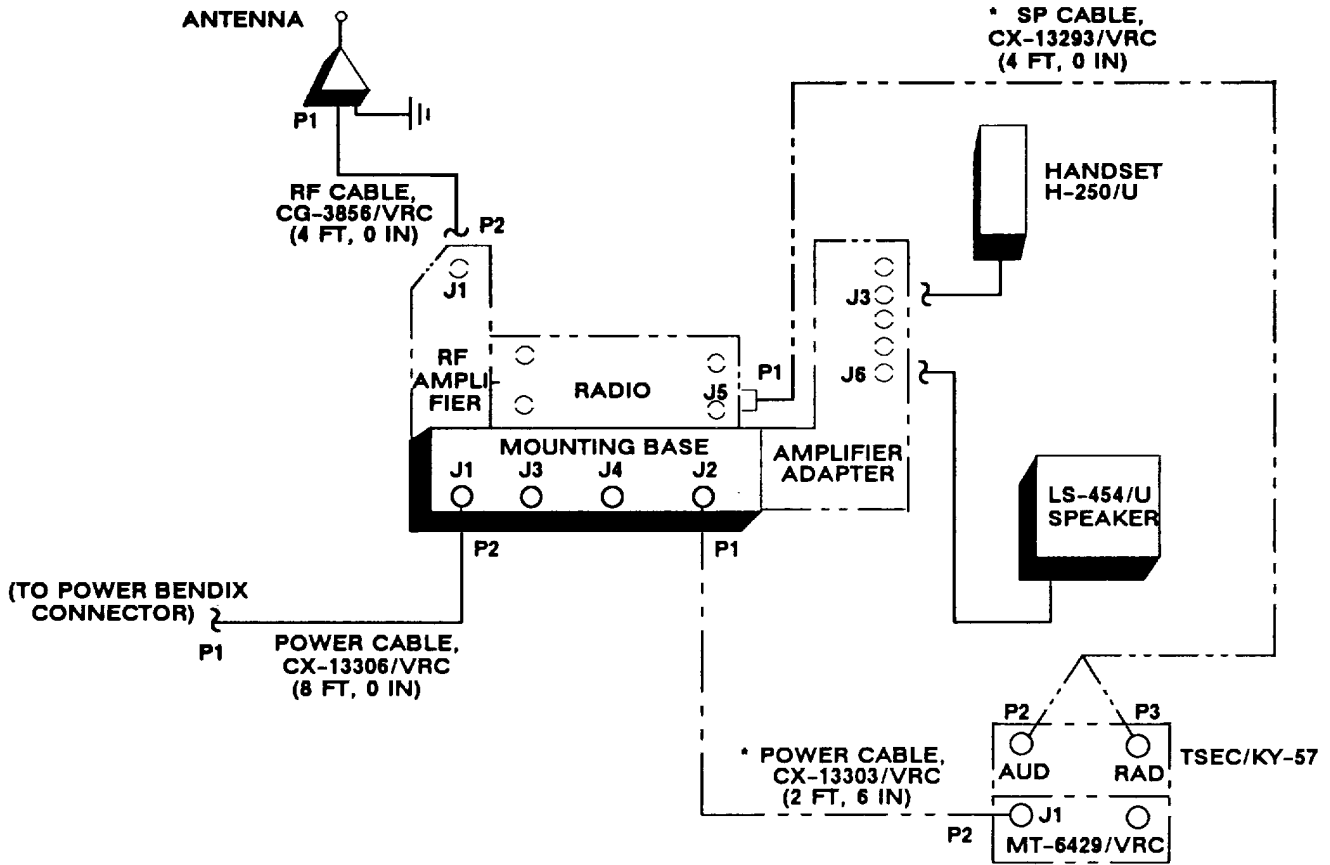
5.6 Post-Installation and Checkout. Continued



| CABLE ASSEMBLY | FROM | | | TO | | |
|------------------------------|-------------|------------------|------------|-------------|------------------------|------------|
| | CABLE CONN. | UNIT | UNIT CONN. | CABLE CONN. | UNIT | UNIT CONN. |
| CX-13306/VRC (8 FT, 0 IN) | P2 | Mounting base | J1 | P1 | Power Bendix connector | |
| CG-3856/VRC (4 FT, 0 IN) | P1 | Antenna base | J1 | P2 | RF amplifier | J1 |
| Handset cable | | Handset | | | Amplifier-adapter | J3 |
| Speaker cable | | LS-454/U speaker | | | Amplifier-adapter | J6 |

Figure 5-8. (1). Cable Diagram: For ANVRC-90A

5.6 Post-Installation and Checkout. Continued



| CABLE ASSEMBLY | FROM | | | TO | | |
|--------------------------------|-------------|------------------|------------|-------------|------------------------|------------|
| | CABLE CONN. | UNIT | UNIT CONN. | CABLE CONN. | UNIT | UNIT CONN. |
| CX-13306/VRC (8 FT, 0 IN) | P2 | Mounting base | J1 | P1 | Power Bendix connector | |
| CG-3856/VRC (4 FT, 0 IN) | P1 | Antenna base | J1 | P2 | RF amplifier | J1 |
| * CX-13303/VRC (2 FT, 6 IN) | P1 | Mounting base | J2 | P2 | MT-6429/VRC | J1 |
| * CX-13293/VRC (4 FT, 0 IN) | P1 | Radio | J5 | P2 P3 | TSEC/KY-57 | AUD RAD |
| Handset cable | | Handset | | | Amplifier-adapter | J3 |
| Speaker cable | | LS-454/U speaker | | | Amplifier-adapter | J6 |

Figure 5-8 (2). Cable Diagram: For ANIVRC-90

APPENDIX A**REFERENCES**

| | |
|---------------------|---|
| AMDF | Army Master Data File (Microfiche) |
| AR 710-2 | Supply Policy Below the Wholesale Level as Contained in Unit Supply UPDATE |
| AR 725-50 | Requisitioning, Receipt and Issuing System in UPDATE |
| DA Pam 25-30 | Consolidated Index of Army Publications (Microfiche) |
| DA Pam 710-2-1 | Using Unit Supply System Manual Procedures as Contained in Unit Supply UPDATE |
| SB 11-131-2 | Vehicular Radio Sets and Authorized Installations (SINCGARS) |
| TM 11-5820-890-10-1 | Operator's Manual (ICOM Radio Sets) |
| TM 11-5820-890-10-3 | Operator's Manual (Non-ICOM Radio Sets) |
| TM 11-5820-890-20-1 | Unit Maintenance Manual (ICOM Radio Sets, Vol.1) |
| TM 11-5820-890-20-2 | Unit Maintenance Manual (ICOM Radio Sets, Vol. 2) |
| TM 11-5820-890-20-3 | Unit Maintenance Manual Handbook (ICOM Radio Sets) |
| TM 11-5820-890-204 | Unit Maintenance Manual (Non-ICOM Radio Sets) |
| TM 11-5820-890-20P | Repair Parts and Special Tools List |

By Order of the Secretary of the Army:

GORDON R. SULLIVAN
General, United States Army
Chief of Staff

Official:



MILTON H. HAMILTON
Administrative Assistant to the
Secretary of the Army
06044

DISTRIBUTION:

To be distributed in accordance with DA Form 12-36-E, block
9634 requirements for TB 11-5820-890-20-62.

* U.S. GOVERNMENT PRINTING OFFICE: 1994 - 510-106/100110

RECOMMENDED CHANGES TO EQUIPMENT TECHNICAL PUBLICATIONS



THEN... JOT DOWN THE DOPE ABOUT IT ON THIS FORM, CAREFULLY TEAR IT OUT, FOLD IT AND DROP IT IN THE MAIL!

SOMETHING WRONG WITH THIS PUBLICATION?

FROM: (PRINT YOUR UNIT'S COMPLETE ADDRESS)

DATE SENT

PUBLICATION NUMBER

PUBLICATION DATE

PUBLICATION TITLE

BE EXACT... PIN-POINT WHERE IT IS

IN THIS SPACE TELL WHAT IS WRONG AND WHAT SHOULD BE DONE ABOUT IT:

| PAGE NO. | PARA-GRAPH | FIGURE NO. | TABLE NO. |
|----------|------------|------------|-----------|
|----------|------------|------------|-----------|

TEAR ALONG PERFORATED LINE

PRINTED NAME, GRADE OR TITLE, AND TELEPHONE NUMBER

SIGN HERE:

DA FORM 2028-2 JUL 79

PREVIOUS EDITIONS ARE OBSOLETE.

P.S.—IF YOUR OUTFIT WANTS TO KNOW ABOUT YOUR RECOMMENDATION MAKE A CARBON COPY OF THIS AND GIVE IT TO YOUR HEADQUARTERS.

